

Wuhan HealthCare Biotechnology Co., Ltd.

Product Catalogue



Regular Fast FISH Probes List

Diagnosis	Cat. #	Description	Name	Format	Volume/Size
Non-Small Cell Lung Cancer	FP-002	ALK gene fusion detection probe	ALK	CE-IVD/RUO	100µL/10 Tests
	FP-006	6q(ROS1) gene detection probe	ROS1	CE-IVD/RUO	100µL/10 Tests
	FP-046	MET gene detection probe	C-MET/CEP7	CE-IVD/RUO	100µL/10 Tests
	FP-082	MAML2(11q21) gene break apart detection probe	MAML2	IVD/RUO	100µL/10 Tests
	FP-231-1	NTRK1 gene break apart detection probe	NTRK1	CE-IVD/RUO	100µL/10 Tests
	FP-231-2	NTRK2(9q21) gene break apart detection probe	NTRK2	CE-IVD/RUO	100µL/10 Tests
	FP-231-3	NTRK3(15q25) gene break apart detection probe	NTRK3	CE-IVD/RUO	100µL/10 Tests
	FP-227	PDL1(9p24)/CSP9 gene amplification detection probe	PD-L1/CEP9	IVD/RUO	100µL/10 Tests
Breast Cancer	FP-001	HER2 gene amplification detection probe	HER2/CEP17	CE-IVD/RUO	100µL/10 Tests
	FP-008	TOP2A gene amplification detection probe	TOP2A	IVD/RUO	100µL/10 Tests
	FP-083	ETV6/NTRK3 gene fusion t(12;15) detection probe	ETV6/NTRK3	IVD/RUO	100µL/10 Tests
	FP-041	CCND1(BCL1) gene amplification detection probe	CCND1/CEP11	IVD/RUO	100µL/10 Tests
Stomach Cancer	FP-203	EPOR(19p13) gene break apart detection probe	EPOR	IVD/RUO	100µL/10 Tests
	FP-001	HER2 gene amplification detection probe	HER2	CE-IVD/RUO	100µL/10 Tests

Bladder Cancer	FP-009	Bladder Cancer Cells chromosome and gene anomaly detection probe	CEP3/CEP7 ; P16/CEP17	CE-IVD/RUO	200µL/10 Tests	
	FP-014-2	CLL chromosome and gene anomaly detection probe	P53/CEP17	CE-IVD/RUO	100µL/10 Tests	
Cervical Cancer	FP-013	TERC gene amplification detection probe	TERC	CE-IVD/RUO	100µL/10 Tests	
	FP-045	1p/19q deletion detection probe	1p/19q	CE-IVD/RUO	200µL/10 Tests	
Brain Cancer	FP-016	BRAF gene break apart detection probe	BRAF	CE-IVD/RUO	100µL/10 Tests	
	FP-243-2	MYC(8q24) ; BCL6(3q27) ; BCL2(18q21) gene break apart detection probe	BCL6	CE-IVD/RUO	100µL/10 Tests	
Lymphoma	FP-243-3	MYC(8q24) ; BCL6(3q27) ; BCL2(18q21) gene break apart detection probe	BCL2	CE-IVD/RUO	100µL/10 Tests	
	FP-242-3	BCL6 ; MYC ; IGH ; BCL2/IGH gene detection probe	IGH	CE-IVD/RUO	100µL/10 Tests	
	FP-234-3	MAFB/IGH ; CCND3/IGH ; MYC/IGH gene fusion detection probe	IGH/C-MYC	CE-IVD/RUO	100µL/10 Tests	
	FP-242-4	BCL6 ; MYC ; IGH ; BCL2/IGH gene detection probe	IGH/BCL2	CE-IVD/RUO	100µL/10 Tests	
	FP-014-2	CLL chromosome and gene anomaly detection probe	P53/CEP17	CE-IVD/RUO	100µL/10 Tests	
	FP-243-1	MYC(8q24) ; BCL6(3q27) ; BCL2(18q21) gene break apart detection probe	MYC	CE-IVD/RUO	100µL/10 Tests	
	FP-233-1	IGH/CCND1 ; IGH/MAF ; IGH/MAFB ; IGH/FGFR3 gene fusion detection probe	CCND1/IGH	CE-IVD/RUO	100µL/10 Tests	
	FP-158	MALT1 gene break apart detection probe	MALT1	IVD/RUO	100µL/10 Tests	
	FP-159	MALT1/IGH gene fusion t(14; 18) detection probe	MALT1/IGH	IVD/RUO	100µL/10 Tests	
	FP-160	IRF4(6p25) gene break apart detection probe	IRF4	IVD/RUO	100µL/10 Tests	
	FP-163	API2/MALT1 t(11;18) gene detection probe	API2/MALT1	IVD/RUO	100µL/10 Tests	
	FP-164	11q23.3/11q24.3 gene deletion detection probe	11q23.3/11q24.3	IVD/RUO	100µL/10 Tests	
	FP-227	PDL1(9p24)/CSP9 gene amplification detection probe	PDL1/CEP9	IVD/RUO	100µL/10 Tests	
	Chronic Lymphocytic Leukemia (CLL)	FP-014-1	CLL chromosome and gene anomaly detection probe	RB1/ATM	CE-IVD/RUO	100µL/10 Tests
		FP-014-2		P53/CEP17	CE-IVD/RUO	100µL/10 Tests
		FP-014-3		D13S319/CEP12	CE-IVD/RUO	100µL/10 Tests
FP-034		Chromosome 12 centromere detection probe	CEP12	CE-IVD/RUO	100µL/10 Tests	
FP-245-3		P53 ; CCND1/IGH ; CEP11/ATM ; CEP12/D13S25 gene detection probe	CEP11/ATM	CE-IVD/RUO	100µL/10 Tests	
FP-025		13(13q14) gene detection probe	D13S319/LAMP1	CE-IVD/RUO	100µL/10 Tests	
FP-036		MYB(6q23) gene detection probe	MYB/CEP6	CE-IVD/RUO	100µL/10 Tests	
FP-198		D13S25(13q14) gene deletion detection probe	D13S25	IVD/RUO	100µL/10 Tests	
FP-200		D13S319 gene deletion detection probe	D13S319	IVD/RUO	100µL/10 Tests	
Acute Myeloid Leukemia/AML (Non APL)		FP-004	AML1/ETO gene fusion detection probe	AML1/ETO	CE-IVD/RUO	100µL/10 Tests
	FP-005	RARA(17q21) detection probe	PML/RARA	CE-IVD/RUO	100µL/10 Tests	
	FP-027	CBFB gene break apart detection probe	CBFB	IVD/RUO	100µL/10 Tests	
	FP-026	KMT2A(MLL) gene break apart detection probe	MLL	CE-IVD/RUO	100µL/10 Tests	
	FP-028	CBFB/MYH11 gene fusion detection probe	CBFB/MYH11	CE-IVD/RUO	100µL/10 Tests	
	FP-043	RARA gene break apart detection probe	RARA	IVD/RUO	100µL/10 Tests	
	FP-179	EVI gene break apart detection probe	EVI1	CE-IVD/RUO	100µL/10 Tests	
	FP-003	BCR/ABL gene fusion detection probe	BCR/ABL	CE-IVD/RUO	100µL/10 Tests	
	FP-170	CHIC2 gene deletion (PDGFRA break) detection probe	CHIC2(PDGFRA)	IVD/RUO	100µL/10 Tests	
Chronic Myeloid Leukemia (CML)	FP-174	NUP98 gene break apart detection probe	NUP98	IVD/RUO	100µL/10 Tests	
	FP-232-1	FGFR1 gene break apart detection probe	FGFR1	CE-IVD/RUO	100µL/10 Tests	
	FP-232-2	PDGFRA ; PDGFRB gene break apart detection probe	PDGFRA	CE-IVD/RUO	100µL/10 Tests	
	FP-230-5	ABL1 ; ABL2 ; PDGFRB ; CRLF2 ; JAK2 gene break apart detection probe	JAK2	IVD/RUO	100µL/10 Tests	
	FP-029	ETV6(TEL)/RUNX1(AML1) gene translocation detection probe	TEL/AML1	CE-IVD/RUO	100µL/10 Tests	
Acute Lymphoblastic Leukemia (ALL)	FP-003	BCRABL gene fusion detection probe	BCR/ABL	CE-IVD/RUO	100µL/10 Tests	
	FP-242-3	BCL6 ; MYC ; IGH ; BCL2/IGH gene detection probe	IGH	CE-IVD/RUO	100µL/10 Tests	
	FP-032	P16 gene deletion detection probe	P16 (CDKN2A)/CEP9	CE-IVD/RUO	100µL/10 Tests	
	FP-026	KMT2A(MLL) gene break apart detection probe	MLL	CE-IVD/RUO	100µL/10 Tests	
	FP-030	Chromosomes 4, 10 detection probe	CEP4/CEP10	IVD/RUO	100µL/10 Tests	
	FP-031	Chromosome 17 centromeric detection probe	CEP17	IVD/RUO	100µL/10 Tests	
	FP-243-1	MYC(8q24)/BCL6(3q27)/BCL2(18q21) gene break apart detection probe	MYC	CE-IVD/RUO	100µL/10 Tests	
	FP-062	TCF3/PBX1 gene fusion detection probe	TCF3/PBX1	CE-IVD/RUO	100µL/10 Tests	
	FP-230-4	ABL1 ; ABL2 ; PDGFRB ; CRLF2 ; JAK2 gene break apart detection probe	CRLF2	IVD/RUO	100µL/10 Tests	
	FP-183	E2A gene break apart detection probe	E2A	CE-IVD/RUO	100µL/10 Tests	
	FP-131	MLL gene deletion detection probe	MLL/CEP11	IVD/RUO	100µL/10 Tests	
	FP-181	ETV6 gene break apart detection probe	ETV6	IVD/RUO	100µL/10 Tests	
FP-208	DEK/NUP214 gene fusion detection probe	DEK/NUP214	IVD/RUO	100µL/10 Tests		

Multiple Myeloma (MM)	FP-317	TCRB (7q34) gene break apart detection probe	TCRB (7q34)	IVD/RUO	100µL/10 Tests
	FP-021	RB1 gene deletion detection probe	RB1	IVD/RUO	100µL/10 Tests
	FP-014-2	CLL chromosome and gene anomaly detection probe	P53/CEP17	CE-IVD/RUO	100µL/10 Tests
	FP-242-3	BCL6 ; MYC ; IGH ; BCL2IGH gene detection probe	IGH	CE-IVD/RUO	100µL/10 Tests
	FP-233-1	IGH/CCND1 ; IGH/MAF ; IGH/MAFB ; IGH/FGFR3 gene fusion detection probe	CCND1/IGH	CE-IVD/RUO	100µL/10 Tests
	FP-025	13 (13q14) gene detection probe	D13S319/LAMP1	CE-IVD/RUO	100µL/10 Tests
	FP-197	1q21 and 1p32 anomaly detection probe	1q21 and 1p32	CE-IVD/RUO	100µL/10 Tests
	FP-233-2	IGH/CCND1 ; IGH/MAF ; IGH/MAFB ; IGH/FGFR3 gene fusion detection probe	MAF/IGH	CE-IVD/RUO	100µL/10 Tests
	FP-234-2	MAFB/IGH ; CCND3/IGH ; MYC/IGH gene fusion detection probe	CCND3/IGH	CE-IVD/RUO	100µL/10 Tests
	FP-233-4	IGH/CCND1 ; IGH/MAF ; IGH/MAFB ; IGH/FGFR3 gene fusion detection probe	FGFR3/IGH	CE-IVD/RUO	100µL/10 Tests
	FP-233-3	IGH/CCND1 ; IGH/MAF ; IGH/MAFB ; IGH/FGFR3 gene fusion detection probe	MAFB/IGH	CE-IVD/RUO	100µL/10 Tests
	FP-195	15q22 and 6q21 anomaly detection probe	15q22/6q21	IVD/RUO	100µL/10 Tests
FP-200	D13S319 gene deletion detection probe	D13S319	IVD/RUO	100µL/10 Tests	
Myelodysplastic Syndrome (MDS)	FP-011-1	MDS chromosome and gene anomaly detection probe	D7S486/CEP7	CE-IVD/RUO	100µL/10 Tests
	FP-011-2		D7S522/CEP7	CE-IVD/RUO	100µL/10 Tests
	FP-011-3		CSF1R/D5S630	CE-IVD/RUO	100µL/10 Tests
	FP-011-4		EGR1/D5S630	CE-IVD/RUO	100µL/10 Tests
	FP-011-5		D20S108/CEP8	CE-IVD/RUO	100µL/10 Tests
	FP-011-6		CEPX/CEPY	CE-IVD/RUO	100µL/10 Tests
	FP-011-7		Yq12/CEPX	CE-IVD/RUO	100µL/10 Tests
	FP-018	Chromosome 8 centromere detection probe	CEP8	CE-IVD/RUO	100µL/10 Tests
FP-232-3	PDGFRB gene break apart detection probe	PDGFRB	IVD/RUO	100µL/10 Tests	
FP-200	D13S319 gene deletion detection probe	D13S319	IVD/RUO	100µL/10 Tests	
FP-305	13q gene detection probe	RB1/13q34	CE-IVD/RUO	100µL/10 Tests	
Aplastic Anemia	FP-018	Chromosome 8 centromeric detection probe	CEP8	CE-IVD/RUO	100µL/10 Tests
	FP-011-1	MDS chromosome and gene anomaly detection probe	D7S486/CEP7	CE-IVD/RUO	100µL/10 Tests
	FP-011-4	MDS chromosome and gene anomaly detection probe	EGR1/D5S630	CE-IVD/RUO	100µL/10 Tests
	FP-020	20q gene deletion detection probe	20q12/20q13.12	CE-IVD/RUO	100µL/10 Tests
Soft Tissue Cancer	FP-055	SS18(SYT) gene break apart detection probe	SS18(SYT)	IVD/RUO	100µL/10 Tests
	FP-054	MDM2 gene amplification detection probe	MDM2	CE-IVD/RUO	100µL/10 Tests
	FP-149	CDK4 (12q13)/SE12 detection probe	CDK4/CEP12	IVD/RUO	100µL/10 Tests
	FP-297	NR4A3(9q22) gene break apart detection probe	NR4A3	IVD/RUO	100µL/10 Tests
Ph. Like ALL	FP-141	CSF1R(5q32) gene break apart detection probe	CSF1R	IVD/RUO	100µL/10 Tests
	FP-188	ABL1(9q34) gene break apart detection probe	ABL1	IVD/RUO	100µL/10 Tests
	FP-189	ABL2(1q25) gene break apart detection probe	ABL2	IVD/RUO	100µL/10 Tests
	FP-230-5	ABL1 ; ABL2 ; PDGFRB ; CRLF2 ; JAK2 gene break apart detection probe	JAK2	IVD/RUO	100µL/10 Tests
Central Nervous System Tumor	FP-048	MYCN gene amplification detection probe	N-MYC/LAF4	IVD/RUO	100µL/10 Tests
	FP-108	Chromosome 7 centromeric detection probe	CEP7 (Green)	IVD/RUO	100µL/10 Tests
Peripheral Nerve Tissue Tumor	FP-050	SRD(1p36) gene deletion detection probe	SRD/PBX1	IVD/RUO	100µL/10 Tests
Prenatal Diagnosis and Postnatal Examination	FP-314	Prenatal chromosomes detection probe	13/21 ; 18/X/Y	CE-IVD/RUO	200µL/10 Tests
Non-Hodgkin Lymphoma	FP-240	BCL6/IGH gene fusion t(3;14) detection probe	BCL6/IGH	IVD/RUO	100µL/10 Tests
	FP-200	D13S319 gene deletion detection probe	D13S319	IVD/RUO	100µL/10 Tests
Acute Myeloid Leukemia /AML	FP-232-3	ABL1 ; ABL2 ; PDGFRB ; CRLF2 ; JAK2 gene break apart detection probe	PDGFRB	IVD/RUO	100µL/10 Tests
	FP-305	13q gene detection probe	RB1/13q34	CE-IVD/RUO	100µL/10 Tests
Prostate Cancer	FP-307	TMPRSS2 gene break apart detection probe	TMPRSS2	IVD/RUO	100µL/10 Tests
Kidney & Vascular Tumor	FP-075	TFE3 gene break apart detection probe	TFE3	IVD/RUO	100µL/10 Tests
Cartilage Tumor	FP-149	CDK4(12q13)/SE12 detection probe	CDK4/CEP12	IVD/RUO	100µL/10 Tests
Myeloproliferative Disease	FP-305	13q gene detection probe	RB1/13q34	CE-IVD/RUO	100µL/10 Tests
Extraskeletal Myxoid Chondrosarcoma (EMC)	FP-297	NR4A3(9q22) gene break apart detection probe	NR4A3	IVD/RUO	100µL/10 Tests
Fibroblast/ Myofibroblastic Tumor	FP-181	ETV6 gene break apart detection probe	ETV6	IVD/RUO	100µL/10 Tests
	FP-074	USP6(17p13) gene break apart detection probe	USP6	IVD/RUO	100µL/10 Tests
	FP-053	FUS gene break apart detection probe	FUS	IVD/RUO	100µL/10 Tests
	FP-051	EWSR1 gene break apart detection probe	EWSR1	IVD/RUO	100µL/10 Tests

Striated muscle tumor (Rhabdomyoma)	FP-056	FKHR gene break apart detection probe	FKHR	IVD/RUO	100µL/10 Tests
	FP-144	PAX3(2q36) gene break apart detection probe	PAX3	IVD/RUO	100µL/10 Tests
Thyroid	FP-059	RET gene break apart detection probe	RET	IVD/RUO	100µL/10 Tests
Fibrohistiocytoma	FP-052	DDIT3(12q13) gene break apart detection probe	DDIT3	IVD/RUO	100µL/10 Tests
Renal Cell Carcinoma (RCC)	FP-105	3p gene detection probe	3p25/CEP3	IVD/RUO	100µL/10 Tests
Plasma Cell Myeloma (PCM)	FP-207	20q gene detection probe	D20S108	IVD/RUO	100µL/10 Tests
Angiosarcoma	FP-015	MYC(8q24) gene amplification detection probe	MYC	CE-IVD/RUO	100µL/10 Tests
Endometrial Stromal Tumor (EST)/Endometrial Cancer	FP-226	JAZF1(7p15) gene break apart detection probe	JAZF1	IVD/RUO	100µL/10 Tests



Fast FISH Probe Kit

Non-Regular Fast FISH Probes List

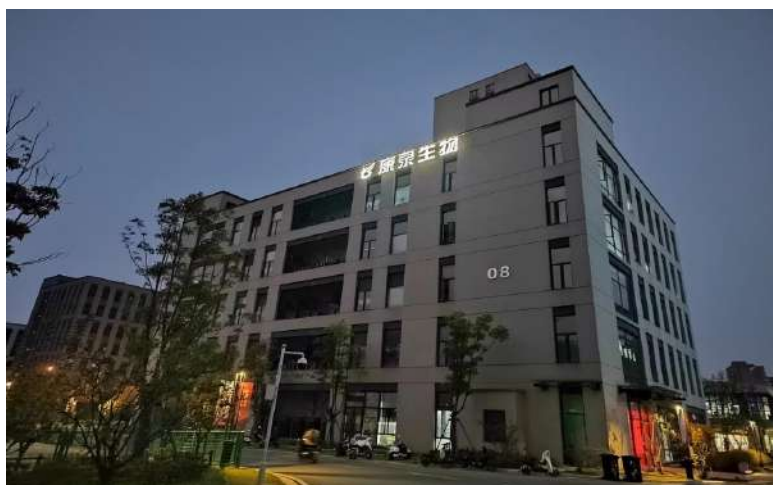
Cat. #	Description	Name	Format	Volume/Size
FP-007	Kappa strand detection probe	IGK	IVD/RUO	100µL/10 Tests
FP-010-2	ERG/TMPRSS2/ETV1/ETV4 gene anomaly detection probe	TMPRSS2/ETV1	IVD/RUO	100µL/10 Tests
FP-010-3	ERG/TMPRSS2/ETV1/ETV4 gene anomaly detection probe	TMPRSS2/ETV4	IVD/RUO	100µL/10 Tests
FP-012	Lambda strand detection probe (IGL gene break apart probe)	IGL	IVD/RUO	100µL/10 Tests
FP-017	C11orf95/RELA t(11;11) gene fusion probe	C11orf95/RELA	IVD/RUO	100µL/10 Tests
FP-022	1q21 gene amplification probe	1q21 orange probe	IVD/RUO	100µL/10 Tests
FP-042	CCND1(BCL1) gene break apart probe	CCND1	IVD/RUO	100µL/10 Tests
FP-049	MDM4 gene amplification probe	MDM4/1q21	IVD/RUO	100µL/10 Tests
FP-076	TFEB(6q21) gene break apart probe	TFEB	IVD/RUO	100µL/10 Tests
FP-077	PLAG1(8q12) gene break apart probe	PLAG1	IVD/RUO	100µL/10 Tests
FP-078	HMGA2(12q14) gene break apart probe	HMGA2	IVD/RUO	100µL/10 Tests
FP-079	MYB gene break apart probe	MYB	IVD/RUO	100µL/10 Tests
FP-081	EWSR1/ATF1 t(12;22) gene fusion probe	EWSR1/ATF1	IVD/RUO	100µL/10 Tests
FP-085	PTEN gene deletion probe	PTEN/CEP10	IVD/RUO	100µL/10 Tests
FP-086	FGFR1 gene amplification probe	FGFR1/CEP8	IVD/RUO	100µL/10 Tests
FP-099	JAZF1/SUZ12 gene fusion probe	JAZF1/SUZ12	IVD/RUO	100µL/10 Tests
FP-100	YWHAE(17p13) gene break apart probe	YWHAE	IVD/RUO	100µL/10 Tests
FP-101	PHF1 gene break apart probe	PHF1	IVD/RUO	100µL/10 Tests
FP-107	Chromosome 3 centromeric probe	CEP3 green probe	IVD/RUO	100µL/10 Tests

FP-109	AML1 gene break apart probe	AML1	IVD/RUO	100µL/10 Tests
FP-110	Chromosome Y centromeric probe	CEPY orange probe	IVD/RUO	100µL/10 Tests
FP-112	FGFR3 gene break apart probe	FGFR3	IVD/RUO	100µL/10 Tests
FP-113	ERG(21q22) gene break apart probe	ERG	IVD/RUO	100µL/10 Tests
FP-117	12p gene probe	12p11/CEP12	IVD/RUO	100µL/10 Tests
FP-121	i(17q) gene probe	P53/MPO	IVD/RUO	100µL/10 Tests
FP-124	C19MC(19q13.42) gene amplification probe	19p13/C19MC	IVD/RUO	100µL/10 Tests
FP-125	CIC(19q13) gene break apart probe	CIC	IVD/RUO	100µL/10 Tests
FP-126	FOXR2(Xp11) gene break apart probe	FOXR2	IVD/RUO	100µL/10 Tests
FP-127	MN1(22q12) gene break apart probe	MN1	IVD/RUO	100µL/10 Tests
FP-128	BCOR(Xp11.4) gene break apart probe	BCOR	IVD/RUO	100µL/10 Tests
FP-130	TERT(5p15) gene break apart probe	TERT	IVD/RUO	100µL/10 Tests
FP-137	COL1A1/PDGFB t (17;22) gene fusion probe	COL1A1/PDGFB	IVD/RUO	100µL/10 Tests
FP-138	MGEA5(10q24) gene break apart probe	MGEA5	IVD/RUO	100µL/10 Tests
FP-145	CAMTA1(1p36) gene break apart probe	CAMTA1	IVD/RUO	100µL/10 Tests
FP-146	FOSB(19q13) gene break apart probe	FOSB	IVD/RUO	100µL/10 Tests
FP-147	FOS gene break apart probe	FOS	IVD/RUO	100µL/10 Tests
FP-150	EWSR1/FLI1 gene fusion probe	EWSR1/FLI1	IVD/RUO	100µL/10 Tests
FP-151	MYEOV/IGH gene fusion probe	MYEOV/IGH	IVD/RUO	100µL/10 Tests
FP-154	EWSR1/WT1 t (11;22) gene fusion probe	EWSR1/WT1	IVD/RUO	100µL/10 Tests
FP-161	TP63(3q28) gene break apart probe	TP63	IVD/RUO	100µL/10 Tests
FP-162	ITK/SYK t (5;9) gene fusion probe	ITK/SYK	IVD/RUO	100µL/10 Tests
FP-168	ASS gene deletion probe	ASS1/CEP9	IVD/RUO	100µL/10 Tests
FP-180	KMT2A/MLLT3 gene fusion probe	KMT2A/MLLT3	IVD/RUO	100µL/10 Tests
FP-185	KMT2A/AFF1 gene fusion probe	KMT2A/AFF1 t (4;11)	IVD/RUO	100µL/10 Tests
FP-199	P53/D13S319 gene deletion probe	D13S319/P53	IVD/RUO	100µL/10 Tests
FP-201	RB1/1q21 gene probe	1q21/RB1	IVD/RUO	100µL/10 Tests
FP-209	Chromosome 4, 10, 17 centromeric probe (Tricolor)	CEP4/CEP10/CEP17	IVD/RUO	100µL/10 Tests
FP-224	CCND2(12p13) gene break apart probe	CCND2	IVD/RUO	100µL/10 Tests
FP-228	PD-L1(9p24)/ABL1(9q34) gene amplification probe	PD-L1/ABL1	IVD/RUO	100µL/10 Tests
FP-229	RELA(11q13) gene break apart probe	RELA	IVD/RUO	100µL/10 Tests
FP-235	Chromosome 7/Chromosome 8 centromere probe	CEP7/CEP8	IVD/RUO	100µL/10 Tests
FP-237	Chromosome 8/Chromosome 17 centromere probe	CEP8/CEP17	IVD/RUO	100µL/10 Tests
FP-239	Chromosome 12/D13S25 gene deletion probe	D13S25/CEP12	IVD/RUO	100µL/10 Tests
FP-240	BCL6/IGH gene fusion t(3;14) probe	BCL6/IGH	IVD/RUO	100µL/10 Tests
FP-250	ALK(2p23) gene amplification probe	ALK/LAF4	IVD/RUO	100µL/10 Tests
FP-251	FGFR2(10q26) gene break apart probe	FGFR2	IVD/RUO	100µL/10 Tests
FP-253	NUT(15q14) gene break apart probe	NUT	IVD/RUO	100µL/10 Tests
FP-257	MALAT1 gene break apart probe	MALAT1	IVD/RUO	100µL/10 Tests
FP-263	WT1(11p13) gene deletion probe	WT1	IVD/RUO	100µL/10 Tests

FP-264	TNFAIP3(6q23) gene deletion probe	TNFAIP3	IVD/RUO	100µL/10 Tests
FP-266	PAX5/IGH t (9;14) gene fusion probe	PAX5/IGH	IVD/RUO	100µL/10 Tests
FP-267	PD-L1(9p24) gene break apart probe	PD-L1	IVD/RUO	100µL/10 Tests
FP-268	PDGFB(22q13) gene break apart probe	PDGFB	IVD/RUO	100µL/10 Tests
FP-271	PD-L2 (9p24) gene amplification probe	PD-L2	IVD/RUO	100µL/10 Tests
FP-273	16q22/16q23 gene deletion probe	16q22; 16q23	IVD/RUO	200µL/10 Tests
FP-274	19q13.42 gene amplification probe	19q13/19p13	IVD/RUO	100µL/10 Tests
FP-275	19p13.3 gene deletion probe	19p13.3	IVD/RUO	100µL/10 Tests
FP-278	1q gene amplification probe	1p36/1q25	IVD/RUO	100µL/10 Tests
FP-279	C11orf95(11q13) gene break apart probe	C11orf95	IVD/RUO	100µL/10 Tests
FP-288	CDK6(7q21) gene amplification probe	CDK6/CEP7	IVD/RUO	100µL/10 Tests
FP-290	BRAF/KIAA1549 t (7;7) gene fusion probe	BRAF/KIAA1549	IVD/RUO	100µL/10 Tests
FP-293	MEF2D(1q22) gene break apart probe	MEF2D	IVD/RUO	100µL/10 Tests
FP-298	STAT6(12q13) gene amplification probe	STAT6/CEP12	IVD/RUO	100µL/10 Tests
FP-299	ZNF384(12p13) gene break apart probe	ZNF384	IVD/RUO	100µL/10 Tests
FP-304	TRA/TRD(14q11) gene break apart probe	TRA/TRD	IVD/RUO	100µL/10 Tests
FP-308	Chromosome 10 centromere probe	CEP10 green probe	IVD/RUO	100µL/10 Tests
FP-310	TCF3/HLF gene fusion probe	TCF3/HLF	IVD/RUO	100µL/10 Tests
FP-311	FUS/ERG gene fusion probe	FUS/SRG	IVD/RUO	100µL/10 Tests
FP-312	PICALM/MLLT10 gene fusion probe	PICALM/MLLT10	IVD/RUO	100µL/10 Tests
FP-313	18q gene probe	BCL2/CEP18	IVD/RUO	100µL/10 Tests
FP-315	RUNX1(21q22) gene probe	RUNX1 (iAMP21) orange probe	IVD/RUO	100µL/10 Tests
FP-316	TERT gene amplification probe	TERT/EGR1	IVD/RUO	100µL/10 Tests
FP-322	9p21/CEP9/CEP17 gene probe (Tricolor)	9p21/CEP9/CEP17	IVD/RUO	100µL/10 Tests
FP-323	4q gene probe	TET2/CEP4	IVD/RUO	100µL/10 Tests
FP-324-1	EWSR1/NFATC2 gene probe	EWSR1/NFATC2	IVD/RUO	100µL/10 Tests
FP-324-2	EWSR1/CREB3L1 gene probe	EWSR1/CREB3L1	IVD/RUO	100µL/10 Tests
FP-324-3	EWSR1/ERG gene probe	EWSR1/ERG	IVD/RUO	100µL/10 Tests
FP-325	6q/6p; 9p/11q; 8q/10q probe	<ul style="list-style-type: none"> 6q23/6p25 9p21/11q13 8q24/10q23 	IVD/RUO	300µL/10 Tests
FP-326	ETV6/CEP12 gene probe	ETV6/CEP12	IVD/RUO	100µL/10 Tests
FP-327	FUBP1/TFE3 gene fusion probe	FUBP1/TFE3	IVD/RUO	100µL/10 Tests
FP-328	CCND2/IGH gene fusion probe	CCND2/IGH	IVD/RUO	100µL/10 Tests
FP-329	CCND3 gene break apart probe	CCND3	IVD/RUO	100µL/10 Tests
FP-330	Bladder cancer chromosome and gene anomaly probe	<ul style="list-style-type: none"> CEP3/CEP7/CEP17 P16/CEP17 	IVD/RUO	200µL/10 Tests
FP-331	NF1 gene deletion probe	NF1/ASPL	IVD/RUO	100µL/10 Tests
FP-332	P2RY8 gene break apart probe	P2RY8	IVD/RUO	100µL/10 Tests
FP-333	YWHAE gene probe	YWHAE/CEP17	IVD/RUO	100µL/10 Tests
FP-334	21q22.2/10p15.3 gene anomaly probe	21q22.2/10p15.3	IVD/RUO	100µL/10 Tests

FP-335	YAP1 gene break apart probe	YAP1	IVD/RUO	100µL/10 Tests
FP-336	TNRC18/RARA gene fusion probe	TNRC18/RARA	IVD/RUO	100µL/10 Tests
FP-337	NCOA3/MGAT5B gene fusion probe	NCOA3/MGAT5B	IVD/RUO	100µL/10 Tests
FP-338	RUNX1(21q22) gene probe	RUNX1	IVD/RUO	100µL/10 Tests
FP-339	MYBL1(8q13) gene break apart probe	MYBL1	IVD/RUO	100µL/10 Tests
FP-340	GATA2/MECOM(RPN1/MECOM) gene anomaly probe	RPN1/MECOM	IVD/RUO	100µL/10 Tests
FP-341	FLT3 gene break apart probe	FLT3	IVD/RUO	100µL/10 Tests
FP-342	KIT gene deletion probe	KIT/CEP4	IVD/RUO	100µL/10 Tests
FP-343	CLIP1/LTK gene fusion probe	CLIP1/LTK	IVD/RUO	100µL/10 Tests
FP-344	7p probe	7p11/CEP7	IVD/RUO	100µL/10 Tests
FP-345	PDGFRA(4q12) probe	PDGFRA/CEP4	IVD/RUO	100µL/10 Tests
FP-346	CREB1(2q33) gene break apart probe	CREB1	IVD/RUO	100µL/10 Tests
FP-347	ATF1(12q13) gene break apart probe	ATF1	IVD/RUO	100µL/10 Tests
FP-348	HNRNPUL1(19q13.2) gene break apart probe	HNRNPUL1	IVD/RUO	100µL/10 Tests
FP-349	PCM1/JAK2 gene fusion probe	PCM1/JAK2	IVD/RUO	100µL/10 Tests
FP-350	13q34 probe	D13S25/13q34	IVD/RUO	100µL/10 Tests
FP-351	VCP/TFE3 gene fusion probe	VCP/TFE3	IVD/RUO	100µL/10 Tests
FP-352	HMGA2/RAD51B gene fusion probe	HMGA2/RAD51B	IVD/RUO	100µL/10 Tests
FP-353	NUP98/TOP1 gene fusion probe	NUP98/TOP1	IVD/RUO	100µL/10 Tests
FP-354	KMT2A/MLLT4 gene fusion probe	KMT2A/MLLT4	IVD/RUO	100µL/10 Tests
FP-355-2	RARA(17q21) probe	RARA orange probe	IVD/RUO	100µL/10 Tests
FP-356	ETV6 (TEL) /RUNX1 (AML1) gene translocation probe	AML1 orange/TEL green	IVD/RUO	100µL/10 Tests
FP-357	KMT2A/MLLT1 gene fusion probe	KMT2A/MLLT1 t (11;19)	IVD/RUO	100µL/10 Tests
FP-358	Chromosome 10/Chromosome XF8 gene anomaly probe	Chr.10/Chr.XF8	IVD/RUO	100µL/10 Tests
FP-359	1q21 and 1p32 gene anomaly probe	1q21/1p32	IVD/RUO	100µL/10 Tests
FP-360	CCNE1 gene amplification probe	CCNE1/19p13	IVD/RUO	100µL/10 Tests
FP-361	IL3/IGH gene fusion probe	IL3/IGH	IVD/RUO	100µL/10 Tests
FP-362	IRF2BP2/RARA gene fusion probe	IRF2BP2/RARA	IVD/RUO	100µL/10 Tests
FP-363	BCL3/IGH gene fusion probe	BCL3/IGH	IVD/RUO	100µL/10 Tests
FP-364	KMT2A/MLLT10 gene fusion probe	KMT2A/MLLT10	IVD/RUO	100µL/10 Tests
FP-369	TCRG (7p14) gene break apart probe	TCRG	IVD/RUO	100µL/10 Tests
FP-384	CLDN4/CEP7 gene dual color probe	CLDN4/CEP7	IVD/RUO	100µL/10 Tests
FP-385	TAL1 gene tricolor probe	TAL1	IVD/RUO	100µL/10 Tests
FP-386	7q22/7q36/CEP7 gene tricolor probe	7q22/7q36/CEP7	IVD/RUO	100µL/10 Tests
FP-387	TCL1 gene dual color break apart probe	TCL1	IVD/RUO	100µL/10 Tests
FP-388	LMO1/TRAD gene fusion dual fusion probe	LMO1/TRAD	IVD/RUO	100µL/10 Tests
FP-389	LMO2/TRAD gene fusion dual fusion probe	LMO2/TRAD	IVD/RUO	100µL/10 Tests
FP-390	IRF5(7q32) gene deletion	IRF5(7q32)	IVD/RUO	100µL/10 Tests
FP-391	RBM10/TFE3 gene dual color probe	RBM10/TFE3	IVD/RUO	100µL/10 Tests
FP-392	IKZF1(7p12) gene deletion	IKZF1(7p12)	IVD/RUO	100µL/10 Tests

FP-395	MTCP1 gene break apart probe	MTCP1	IVD/RUO	100µL/10 Tests
FP-396	CDK6 gene break apart probe	CDK6	IVD/RUO	100µL/10 Tests
FP-398	CBFA2T3/GLIS2 gene fusion probe	CBFA2T3/GLIS2	IVD/RUO	100µL/10 Tests
FP-152	ASPSR1/TFE3 gene fusion probe	ASPSR1/TFE3	IVD/RUO	100µL/10 Tests
FP-143	NCOA2 break apart probe	NCOA2	IVD/RUO	100µL/10 Tests
FP-397	FOXP1/IGH gene fusion probe	FOXP1/IGH	IVD/RUO	100µL/10 Tests
FP-402	NUP214/ABL1 gene break apart probe	NUP214/ABL1	IVD/RUO	100µL/10 Tests
FP-252	CSF1 gene probe	CSF1	IVD/RUO	100µL/10 Tests
FP-400	HOXA gene break apart probe	HOXA	IVD/RUO	100µL/10 Tests
FP-401	5p15/9q22/15q22 gene tricolor probe	5p15/9q22/15q22	IVD/RUO	100µL/10 Tests
FP-399	LRRC15 gene probe	LRRC15/CEP3	IVD/RUO	100µL/10 Tests
FP-400	BCL11A gene break apart probe	BCL11A	IVD/RUO	100µL/10 Tests
FP-426	ALK/EML4 gene fusion tricolor probe	ALK/EML4	IVD/RUO	100µL/10 Tests
FP-424	NUP98/NSD1 gene fusion probe	NUP98/NSD1	IVD/RUO	100µL/10 Tests
FP-094	EWSR1/CREB1 gene fusion probe	EWSR1/CREB1	IVD/RUO	100µL/10 Tests
FP-153	PRCC/TFE3 gene probe	PRCC/TFE3	IVD/RUO	100µL/10 Tests
FP-420	FGFR2 amplification gene probe	FGFR2	IVD/RUO	100µL/10 Tests
FP-425	BCL11B break apart gene probe	BCL11B	IVD/RUO	100µL/10 Tests
FP-427	11q13.3/CEP11 gene abnormality probe	11q13.3/CEP11	IVD/RUO	100µL/10 Tests
FP-429	4p16.3/CEP4 gene abnormality probe	4p16.3/CEP4	IVD/RUO	100µL/10 Tests
FP-428	YAP1/CEP11 gene amplification probe	YAP1/CEP11	IVD/RUO	100µL/10 Tests
FP-430	ZMYM2/FGFR1 gene fusion probe	ZMYM2/FGFR1	IVD/RUO	100µL/10 Tests


[Basic Information]

 Manufacturer: **Wuhan HealthCare Biotechnology Co., Ltd.**

 Address/Production Address/After-sale Service: **Building #8, Optics Valley Precision Medicine Industry Base Phase I, #9 Gaokeyuan 3rd Road, East Lake High-Tech Zone. 430206, Wuhan City, Hubei Province, People's Republic of China.**

 Tel.#: 027-87570662 Ext. #814; Email: cs@healthcare-bio.com

 Tel.#: 18707111804 ; Email: bd@healthcare-biotech.com
[Product List]

Product List Version: V1. 5.8. Reviewed on December 08, 2023.

Product List version: V1. 0.0. Approval date March 01, 2018.